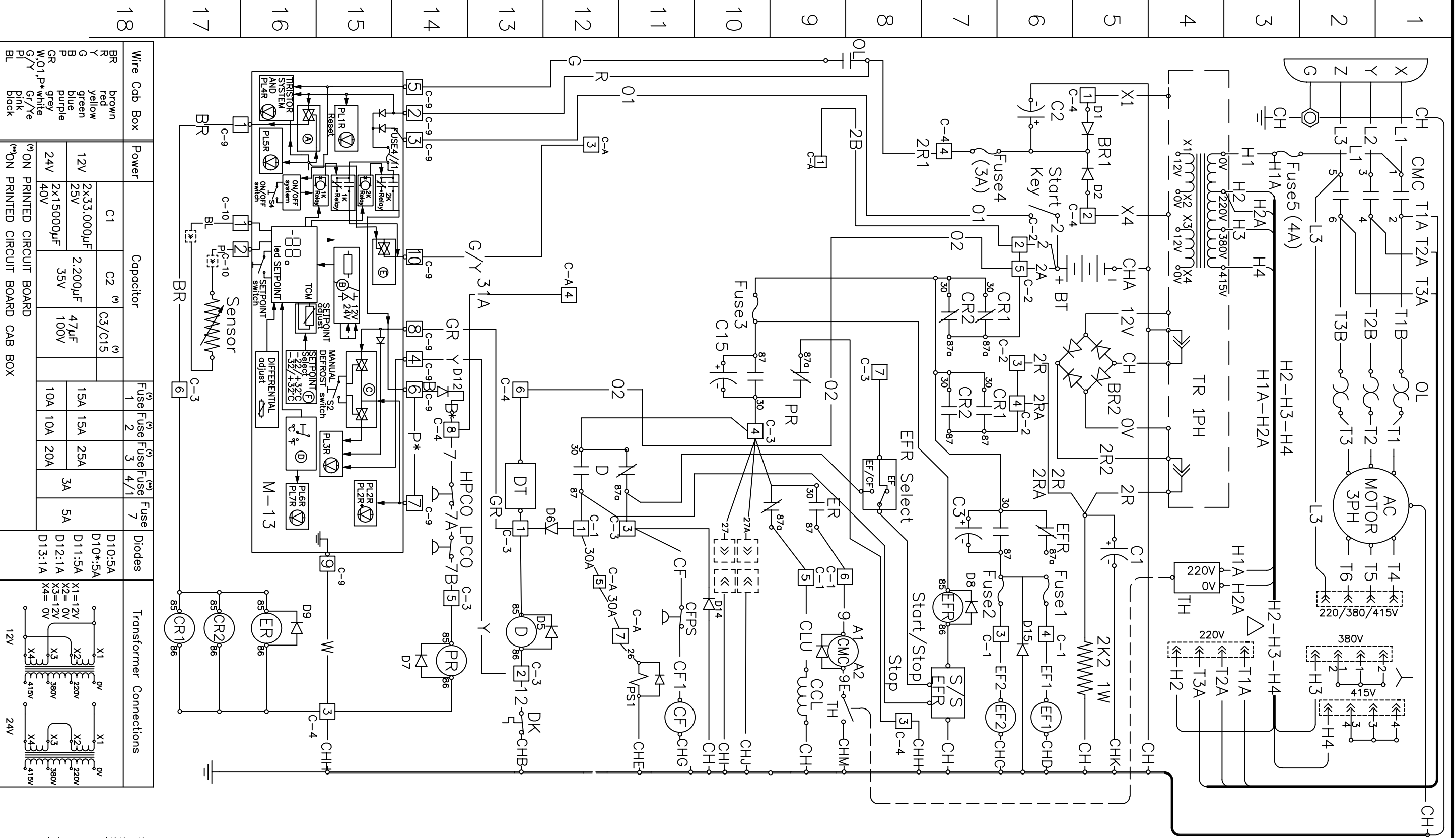


REVISIONS	
A	2112 JT 29/11/99 AS
RELEASED	
B	77791 MN 12/07/00 AS
CHANGE CONNECTION HEATERS WAS C-1/1. ADD CONNECTOR C-A (WITH WIRE 30A) & C-H.	

Wire Cab Box	Power	Capacitor	Fuse	Diodes	Transformer Connections
BR brown R red Y yellow G green B blue P purple GR grey W/O 1 P* white G/Y green/white PL black BL black	C1 12V 2x33.000µF 25V 2x15000µF 24V 40V	C2 (a) 2.200µF 35V C3/C15 (a) 47µF 100V	Fuse 1 (a) Fuse 2 (a) Fuse 3 (a) Fuse 4/1 (a) Fuse 7 (a)	D10:5A D10*:5A D11:5A D12:1A D13:1A	X1=12V X2=0V X3=12V X4=0V X1=0V X2=220V X3=380V X4=415V X1=0V X2=220V X3=380V X4=415V

IDENT.	LEGEND	AREA
A	BLOCK ELECTRONIC SWITCH	16
B	VOLTAGE SELECT	15
BR 1,2	BRIDGE RECTIFIER 1PH	5
BATTERY	BATTERY	5,6
C	BLOCK ELECTRONIC SWITCH	5
C1	CAPACITOR	5
C2	CAPACITOR	6
C3	CAPACITOR	7
C4	CAPACITOR	10
CCL1	CONDENSER FAN MOTOR	9,10
CF	CONDENSER FAN MOTOR	11
CFPS	COMPRESSOR SWITCH	11
CMC	COMPRESSOR MOTOR	9
CR1	CONTACTOR	7,17
CR2	COMMUTATION RELAY	7,17
D	BLOCK 9C,9F SWITCH	14,16
DK	DEFROST RELAY	16
DT	DEFROST TEMP. THERMOSTAT	12,13
DI	DIODES PROTECTION:	13
	-D8,D15,D5,D13, D6,D14,D7,D9	6,7
	-D10,D11,D12,D10*	11,12
	-EVAPORATOR FAN MOTOR	14,16
	-EVAPORATOR FAN MOTOR	6,7
	-EVAPORATOR FAN RELAY	7,8
	-ELECTRIC STANDBY RELAY	9,10
FUSE	CURRENT LIMITER:	10,11,16
	-1	6
	-2	6,7
	-3	10
	-4	7
	-4.1	15
	-5	3
HP	HIGH PRESSURE CUTOFF SWITCH	14
HP	HEAT PRESSURE CUTOFF SWITCH	14
HP	HEAT PRESSURE THERMOSTAT RELAY	14
LP	LOW PRESSURE CUTOFF SWITCH	14
LP	HEAT RELAY CAB CONTROL BOX OVERLOAD MOTOR PROTECTOR	11
HR	HEAT RELAY CAB CONTROL BOX OVERLOAD MOTOR PROTECTOR	11,16
OL	PILOT LIGHTS:	1,2,8
PL	-1R DEFROST LED	15
	-2R 2R* ON LED	15
	-3R POWER CORD LED	15
	-4R OVERLOAD LED	16
	-5R ON MEMBRANE SWITCH LED	16
	-6R 9C LED	16
	-7R 9F LED	16
PS1	PILOT SOLENOID	12
S2	MANUAL DEFROST MEMBRANE SWITCH	12
S4	ON-OFF MEMBRANE SW. START/STOP EIMP FAN RELAY	15
S/S-EFR	TEMPERATURE CONTROL MODULE:	7
TM	-DIFFERENTIAL ADJUST -SETPPOINT ADJUST -SETPPOINT LED THERMISTOR TRANSFORMER 1PH	16 15 16 4,8
TR	TRANSFORMER 1PH	4



ITEM	PART NUMBER	REV.	DESCRIPTION	QTY.	MAT'L SPEC'S
LIST OF MATERIAL					
DRAWN		DATE	<div style="display: flex; justify-content: space-between; align-items: center;"> <div style="text-align: center;"> <h2>DIAGRAM SCHEMATIC</h2> <h3>VM400-20</h3> <p>3 PH; 12V; 24V</p> <p>SHEET 1 OF 1</p> </div> <div style="text-align: right;"> <p>Ref. 1B21234</p> </div> </div>		
CHECKED		DATE			
APPROVED		DATE			
THIS PRINT SUPERSEDES ANY OF EARLIER DATE. DESTROY SAME.			DRAWING NUMBER		
SCALE			REV.		
MATERIAL:			1B21235		
FINISH:			B		

THIS DOCUMENT CONTAINS PROPRIETARY INFORMATION OF THE THERMO KING CORPORATION. IT IS TRANSMITTED TO YOU IN CONFIDENCE AND TRUST, AND IS TO BE RETURNED UPON REQUEST. ITS CONTENTS MAY NOT BE DISCLOSED IN WHOLE OR IN PART TO OTHERS OR USED FOR OTHER THAN THE PURPOSE FOR WHICH TRANSMITTED WITHOUT THE PRIOR WRITTEN PERMISSION OF THERMO KING CORPORATION.