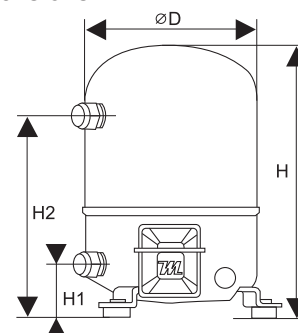
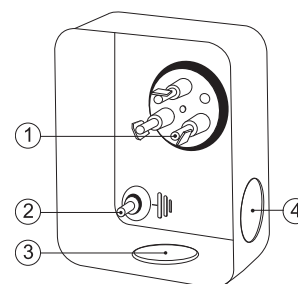


General Characteristics

	LTZ28JH4A	LTZ28JH4AVE
Model number (on compressor nameplate)	LTZ28-4I	LTZ28-4VI
Code number for Singlepack*	LTZ28-4I	LTZ28-4VI
Code number for Industrial pack**	LTZ28-4M	LTZ28-4VM
Drawing number	8501033E	8501026E
Suction and discharge connections	Rotolock	Rotolock
Suction connection	1-1/4 " Rotolock	1-1/4 " Rotolock
Discharge connection	1 " Rotolock	1 " Rotolock
Suction connection with supplied sleeve	5/8 " ODF	5/8 " ODF
Discharge connection with supplied sleeve	1/2 " ODF	1/2 " ODF
Oil sight glass	None	Threaded
Oil equalisation connection	None	3/8" flare SAE
Oil drain connection	None	None
LP gauge port	Schrader	Schrader
IPR valve	30 bar / 8 bar	30 bar / 8 bar
Cylinders	1	
Swept volume	67,89 cm ³ /rev	
Displacement @ Nominal speed	11.8 m ³ /h @ 2900 rpm - 14.3 m ³ /h @ 3500 rpm	
Net weight	23 kg	
Oil charge	0,95 litre, POE - 160Z	
Maximum system test pressure Low Side / High side	25 bar(g) / 30 bar(g)	
Maximum differential test pressure	30 bar	
Maximum number of starts per hour	12	
Refrigerant charge limit	2,5 kg	
Approved refrigerants	R404A - R507A	

Dimensions


D=224 mm
H=333 mm
H1=263 mm
H2=68 mm

Terminal box


IP55 (with cable gland)

- 1: Spade connectors 1/4"
- 2: Earth M4-12, torque 2 Nm (17 in.lb)
- 3: Knock-out Ø 21 mm (0.83")
- 4: Hole Ø 21 mm (0.83")

Electrical Characteristics

Nominal voltage	400V/3/50Hz - 460V/3/60Hz
Voltage range	360-440 V @ 50Hz - 414-506 V @ 60Hz
Winding resistance (between phases) +/- 7% at 25°C	7.11 Ω
Maximum Continuous Current (MCC)	7.5 A
Locked Rotor Amps (LRA)	23 A
Motor protection	Internal overload protector

Recommended Installation torques

Suction Rotolock nut or valve	90 Nm
Discharge Rotolock nut or valve	80 Nm
Oil sight glass	50 Nm
Power connections / Earth connection	Nm / 2 Nm
Mounting bolts	15 Nm

Parts shipped with compressor

Mounting kit with grommets, bolts, nuts, sleeves and washers
Suction & Discharge solder sleeves, rotolock nuts and gaskets (shipped with rotolock version only)
Initial oil charge
Installation instructions

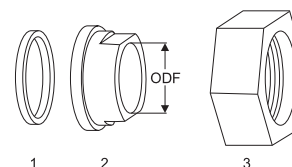
Approvals : CE certified, UL certified (file SA6873), -

*Singlepack: Compressor in cardboard box

**Industrial pack: 12 Unboxed compressors on pallet (order per multiples of 12)

Rotolock accessories, suction side
Code no.

Solder sleeve, P09 (1-1/4" Rotolock, 5/8" ODF)	8153011
Angle adapter, C09 (1-1/4" Rotolock, 5/8" ODF)	8168009
Rotolock valve, V09 (1-1/4" Rotolock, 5/8" ODF)	8168033
Gasket, 1-1/4"	8156131

Gaskets, sleeves and nuts


- 1: Gasket
- 2: Solder sleeve
- 3: Rotolock nut

Rotolock accessories, discharge side
Code no.

Solder sleeve, P06 (1" Rotolock, 1/2" ODF)	8153007
Angle adapter, C06 (1" Rotolock, 1/2" ODF)	8168007
Rotolock valve, V06 (1" Rotolock, 1/2" ODF)	8168031
Gasket, 1"	8156130

Rotolock accessories, sets
Code no.

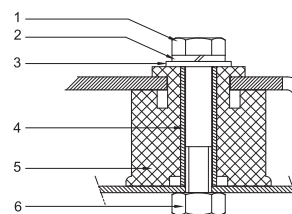
Angle adapter set, C09 (1-1/4"~5/8"), C06 (1"~1/2")	7703012
Valve set, V09 (1-1/4"~5/8"), V06 (1"~1/2")	7703005
Gasket set, 1", 1-1/4", 1-3/4", OSG gaskets black & white	8156009

Oil / lubricants
Code no.

POE lubricant, 160Z, 1 litre can	7754025
POE lubricant, 160Z, 2 litre can	7754026

Crankcase heaters
Code no.

PTC crankcase heater, 35 W, incl. heat transfer paste	7773001
PTC crankcase heater, 35 W, mounting without paste	7773125
Belt type crankcase heater, 55 W, 230 V, CE mark, UL	7773106
Belt type crankcase heater, 54 W, 460 V, UL	7773111
Belt type crankcase heater, 54 W, 240 V, UL	7773002
Belt type crankcase heater, 54 W, 400 V, UL	7773013

Mounting kit


- 1: Bolt (3x)
- 2: Lock washer (3x)
- 3: Flat washer (3x)
- 4: Sleeve (3x)
- 5: Grommet (3x)
- 6: Nut (3x)

Miscellaneous accessories
Code no.

Acoustic hood for 1 cylinder compressor	7755001
Oil equalisation nut	8153127

Spare parts
Code no.

Mounting kit with bolts for 1 and 2 cylinder compressor	8156001
Sight glass with gaskets (black & white)	8156019
Gasket for oil sight glass, 1-1/8" (black chloroprene)	8156145
Cover + clamp for terminal box 80 x 96 mm	8156134

Performance data at 50 Hz, Asercom rating conditions

R404A

Cond. temp. in °C (tc)	Evaporating temperature in °C (to)							
	-45	-40	-35	-30	-25	-20		

Cooling capacity in W

30	716	1 143	1 673	2 318	3 093	4 010		
35	574	973	1 466	2 068	2 791	3 650		
40	436	803	1 257	1 812	2 482	3 279		
45	305	637	1 049	1 554	2 166	2 899		
50	184	479	845	1 298	1 849	2 514		
55	-	331	649	1 046	1 534	2 128		
60	-	-	464	802	1 224	1 743		

Power input in W

30	1 044	1 316	1 581	1 840	2 092	2 335		
35	995	1 288	1 576	1 860	2 137	2 409		
40	931	1 247	1 559	1 869	2 175	2 477		
45	850	1 189	1 528	1 866	2 203	2 537		
50	748	1 113	1 480	1 848	2 216	2 584		
55	-	1 015	1 412	1 812	2 214	2 617		
60	-	-	1 322	1 755	2 192	2 632		

Current consumption in A

30	2.90	3.13	3.41	3.72	4.02	4.30		
35	2.87	3.12	3.42	3.74	4.08	4.40		
40	2.82	3.08	3.40	3.76	4.13	4.50		
45	2.73	3.02	3.37	3.76	4.18	4.59		
50	2.62	2.93	3.32	3.75	4.21	4.68		
55	-	2.81	3.23	3.71	4.22	4.75		
60	-	-	3.12	3.65	4.21	4.80		

Mass flow in kg/h

30	25	38	54	73	95	120		
35	21	35	51	70	92	117		
40	18	32	48	67	88	113		
45	14	28	44	63	84	109		
50	9	23	39	58	80	105		
55	-	18	34	53	75	99		
60	-	-	29	47	69	93		

Coefficient of performance (C.O.P.)

30	0.69	0.87	1.06	1.26	1.48	1.72		
35	0.58	0.76	0.93	1.11	1.31	1.52		
40	0.47	0.64	0.81	0.97	1.14	1.32		
45	0.36	0.54	0.69	0.83	0.98	1.14		
50	0.25	0.43	0.57	0.70	0.83	0.97		
55	-	0.33	0.46	0.58	0.69	0.81		
60	-	-	0.35	0.46	0.56	0.66		

Nominal performance at to = -35 °C, tc = 40 °C

Cooling capacity	1 257	W
Power input	1 559	W
Current consumption	3.40	A
Mass flow	48	kg/h
C.O.P.	0.81	

Pressure switch settings

Maximum HP switch setting	27.7	bar(g)
Minimum LP switch setting	0.1	bar(g)
LP pump down setting	0.1	bar(g)

Sound power data

Sound power level	69	dB(A)
With acoustic hood	62	dB(A)

to: Evaporating temperature at dew point

tc: Condensing temperature at dew point

Rating conditions : Superheat = 10 K , Subcooling = 0 K

All performance data +/- 5%

Performance data at 50 Hz, ARI rating conditions
R404A

Cond. temp. in °C (tc)	Evaporating temperature in °C (to)							
	-45	-40	-35	-30	-25	-20		

Cooling capacity in W

30	805	1 280	1 867	2 580	3 434	4 441		
35	653	1 102	1 655	2 327	3 131	4 082		
40	504	923	1 439	2 066	2 818	3 710		
45	359	746	1 222	1 801	2 499	3 330		
50	223	574	1 007	1 537	2 178	2 945		
55	-	411	799	1 277	1 859	2 560		
60	-	-	600	1 025	1 547	2 183		

Power input in W

30	1 044	1 316	1 581	1 840	2 092	2 335		
35	995	1 288	1 576	1 860	2 137	2 409		
40	931	1 247	1 559	1 869	2 175	2 477		
45	850	1 189	1 528	1 866	2 203	2 537		
50	748	1 113	1 480	1 848	2 216	2 584		
55	-	1 015	1 412	1 812	2 214	2 617		
60	-	-	1 322	1 755	2 192	2 632		

Current consumption in A

30	2.90	3.13	3.41	3.72	4.02	4.30		
35	2.87	3.12	3.42	3.74	4.08	4.40		
40	2.82	3.08	3.40	3.76	4.13	4.50		
45	2.73	3.02	3.37	3.76	4.18	4.59		
50	2.62	2.93	3.32	3.75	4.21	4.68		
55	-	2.81	3.23	3.71	4.22	4.75		
60	-	-	3.12	3.65	4.21	4.80		

Mass flow in kg/h

30	24	38	54	73	94	119		
35	21	35	51	70	91	116		
40	18	31	47	66	88	113		
45	14	27	43	62	84	109		
50	9	23	39	58	79	104		
55	-	18	34	53	74	99		
60	-	-	29	47	68	93		

Coefficient of performance (C.O.P.)

30	0.77	0.97	1.18	1.40	1.64	1.90		
35	0.66	0.86	1.05	1.25	1.46	1.69		
40	0.54	0.74	0.92	1.11	1.30	1.50		
45	0.42	0.63	0.80	0.97	1.13	1.31		
50	0.30	0.52	0.68	0.83	0.98	1.14		
55	-	0.40	0.57	0.70	0.84	0.98		
60	-	-	0.45	0.58	0.71	0.83		

Nominal performance at to = -35 °C, tc = 40 °C

Cooling capacity	1 439	W
Power input	1 559	W
Current consumption	3.40	A
Mass flow	47	kg/h
C.O.P.	0.92	

Pressure switch settings

Maximum HP switch setting	27.7	bar(g)
Minimum LP switch setting	0.1	bar(g)
LP pump down setting	0.1	bar(g)

Sound power data

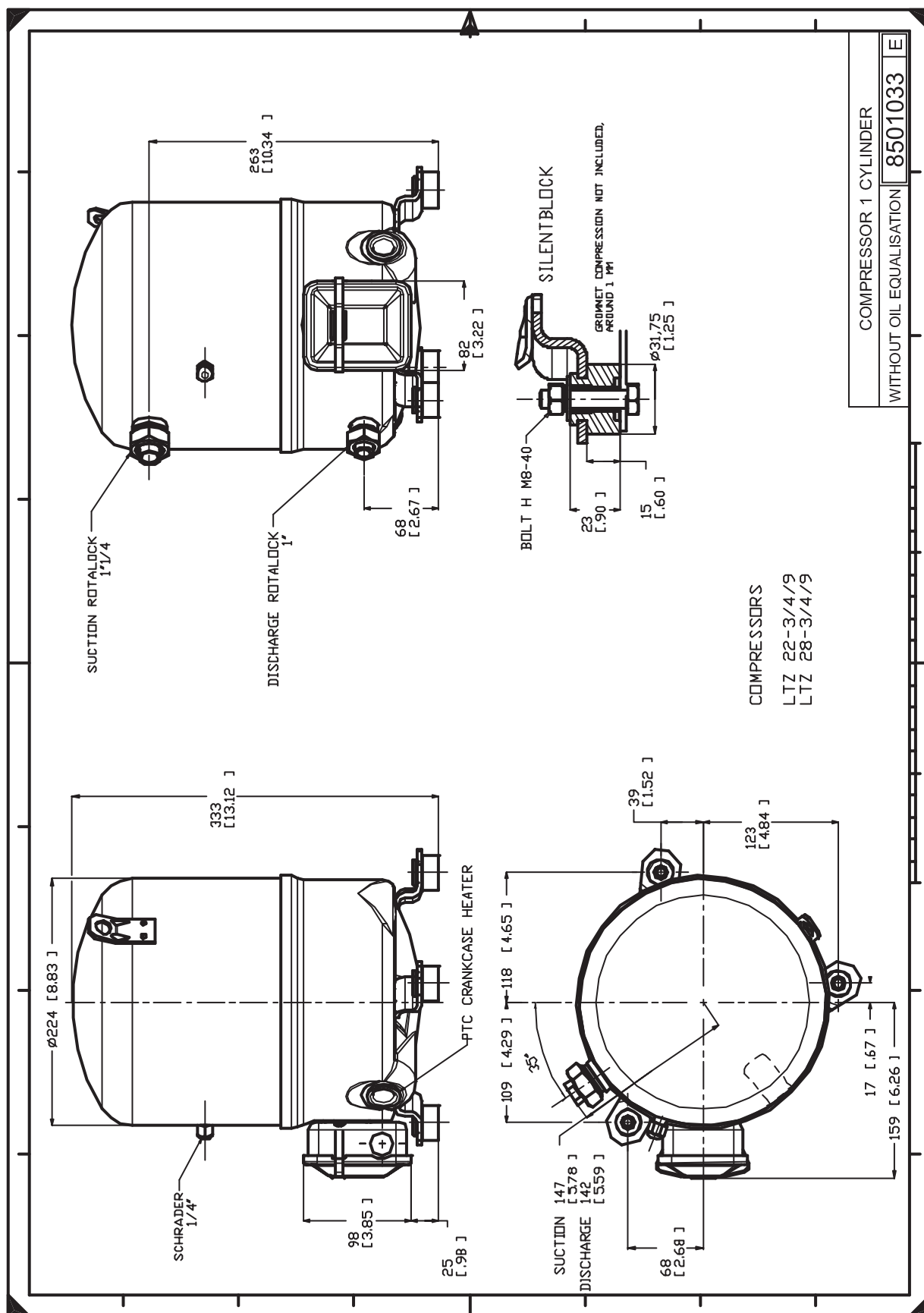
Sound power level	69	dB(A)
With acoustic hood	62	dB(A)

to: Evaporating temperature at dew point

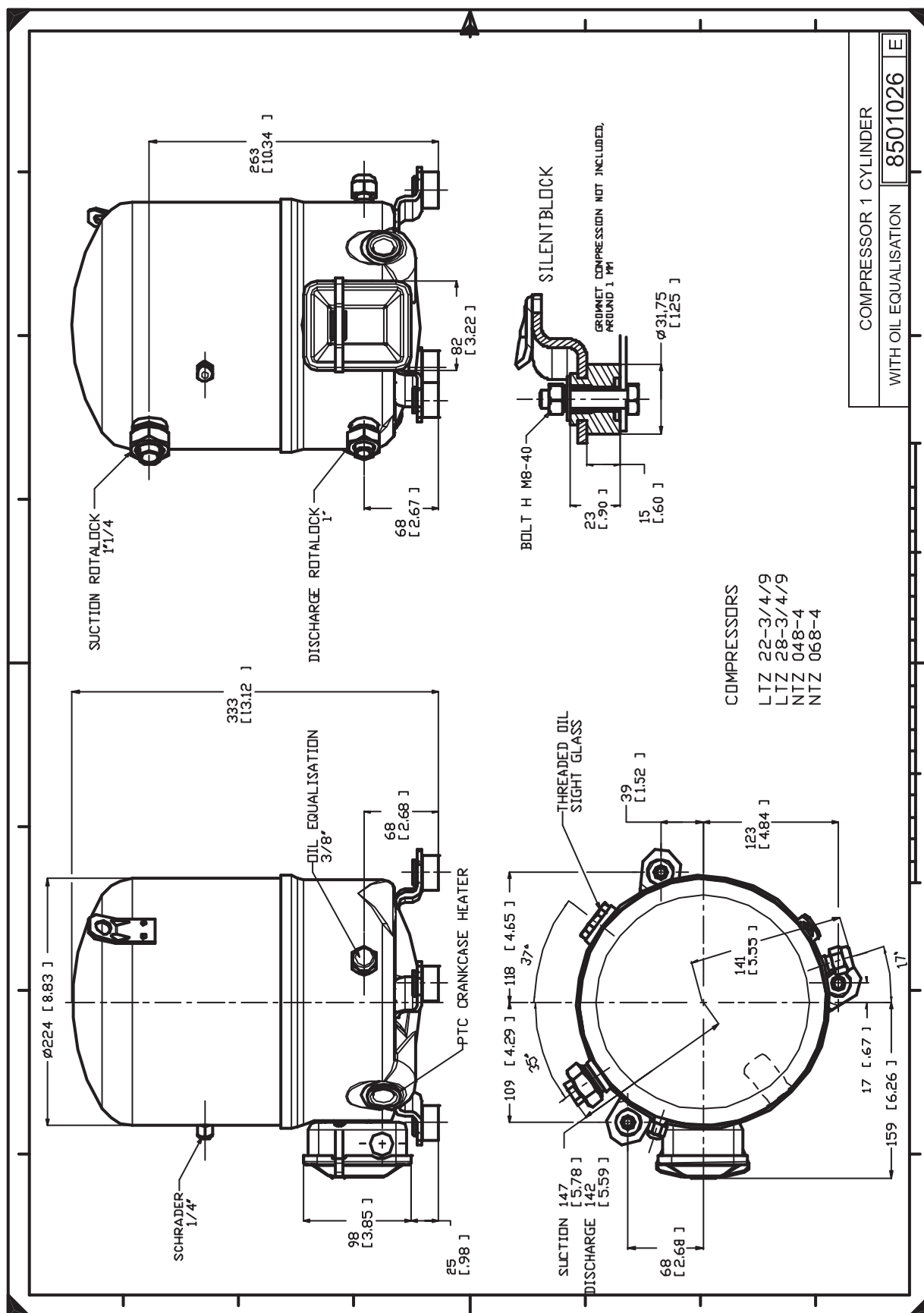
tc: Condensing temperature at dew point

Rating conditions : Superheat = 11.1 K , Subcooling = 8.3 K

All performance data +/- 5%



Danfoss can accept no responsibility for possible errors in catalogues, brochures and other printed material. Danfoss reserves the right to alter its products without notice. This also applies to products already on order provided that such alternations can be made without subsequential changes being necessary in specifications already agreed. All trademarks in this material are property of the respective companies. Danfoss, the Danfoss logotype and Maneurop are trademarks of Danfoss A/S. All rights reserved.



Danfoss can accept no responsibility for possible errors in catalogues, brochures and other printed material. Danfoss reserves the right to alter its products without notice. This also applies to products already on order provided that such alternations can be made without consequential changes being necessary in specifications already agreed. All trademarks in this material are property of the respective companies. Danfoss, the Danfoss logotype and Maneurop are trademarks of Danfoss A/S. All rights reserved.