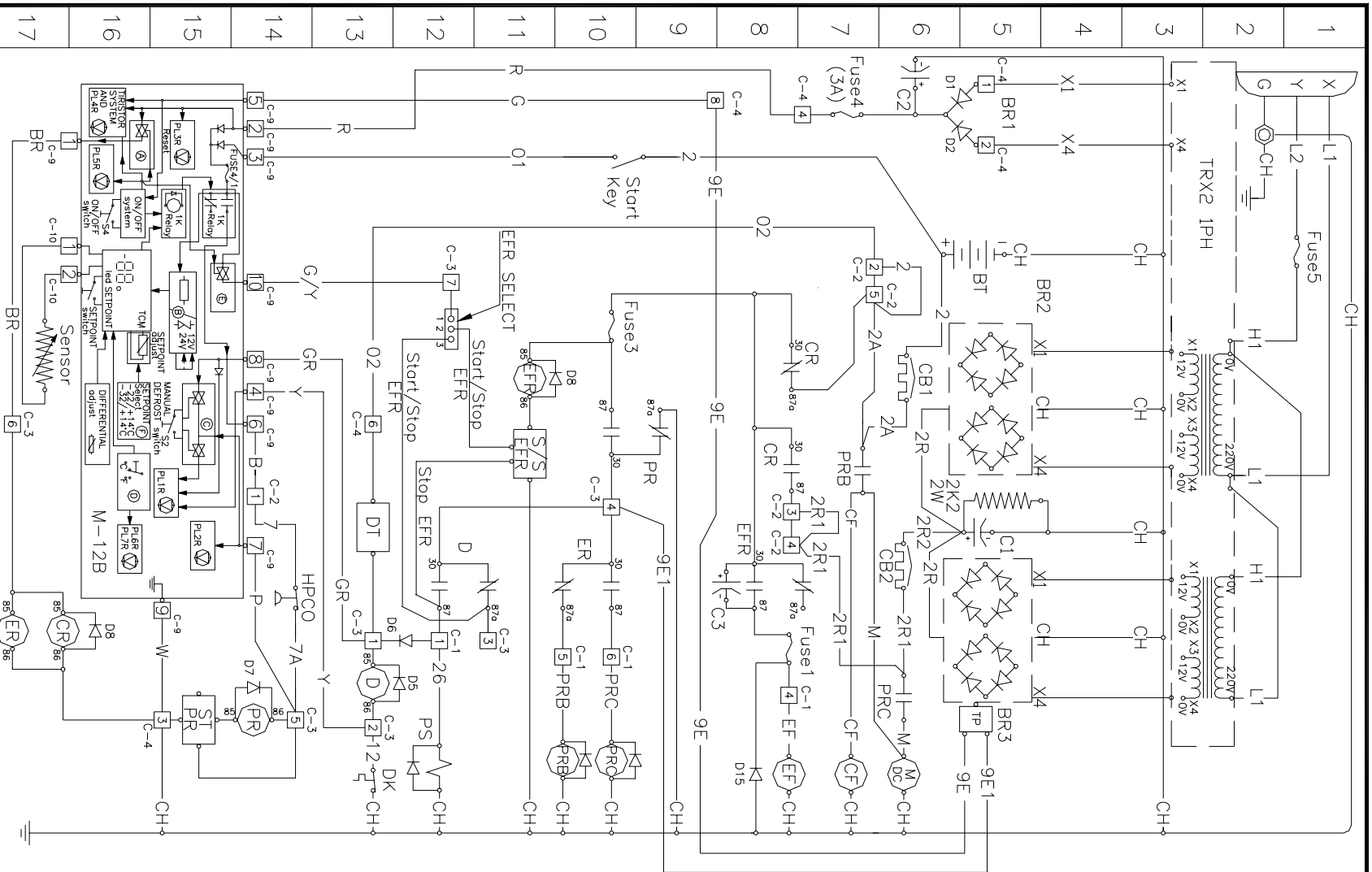


ITEM	PART NUMBER	REV.	DESCRIPTION	QTY.	MAT'L SPEC'S
LIST OF MATERIAL					
<b>SCHEMATIC DIAGRAM</b> <b>B-085</b> <b>1 PH; 12V; 24V</b> <b>(PE-15)</b>					
SHEET <u>1</u> OF <u>1</u>					
DRAWN A. MERCE					DATE 24.03.98
CHECKED Manel. R					DATE 20.05.98
APPROVED A. MERCE					DATE 24.03.98
THIS PRINT SUPERSEDES ANY OF EARLIER DATE. DESTROY SAME.					
MATERIAL:			SCALE		
FINISH:					
THIS DOCUMENT CONTAINS PROPRIETARY INFORMATION OF THE THERMO KING CORPORATION. IT IS TRANSMITTED TO YOU IN CONFIDENCE AND TRUST, AND IS TO BE RETURNED UPON REQUEST. ITS CONTENTS MAY NOT BE DISCLOSED IN WHOLE OR IN PART TO OTHERS OR USED FOR OTHER THAN THE PURPOSE FOR WHICH TRANSMITTED WITHOUT THE PRIOR WRITTEN PERMISSION OF THERMO KING CORPORATION.					



Wire Cab Box	Power	Capacitor	Fuse <sup>1)</sup>	Fuse <sup>2)</sup>	Fuse <sup>3)</sup>	Fuse <sup>4)</sup>	Fuse <sup>5)</sup>	ON/CAB BOX	Transformer Connections
BR	brown	C1	1	3	4	5			X1=12V X2=0V X3=12V X4=0V
R	red	C2 <sup>1)</sup>							X1=12V X2=0V X3=12V X4=0V
O	orange	99,000µF	15A	10A	3A	1A	5A		X1=12V X2=0V X3=12V X4=0V
Y	yellow	2,200µF							X1=12V X2=0V X3=12V X4=0V
G	green	25V							X1=12V X2=0V X3=12V X4=0V
B	blue	47,000µF							X1=12V X2=0V X3=12V X4=0V
P	purple	1000µF							X1=12V X2=0V X3=12V X4=0V
GR	grey	50V							X1=12V X2=0V X3=12V X4=0V
W	white	40V							X1=12V X2=0V X3=12V X4=0V

IDENT.	LEGEND	AREA
A	ELECTRONIC SWITCH	16
B	VOLTAGE SELECT	15
BLOCK	BRIDGE RECTIFIER 1PH	5,6
BR1, BR2, BR3	BATTERY	6
CB1, CB2	CIRCUIT BREAKER	15
C1, C2	ELECTRONIC SWITCH	5,6
C3	CAPACITOR	8
CB1, CB2	CIRCUIT BREAKER	5,6
CR	CONDENSER FAN MOTOR	8,17
CF	COMMUTATION RELAY	16
D	DEFROST RELAY	11,13
DK	°C.F. SWITCH	16
D	DEFROST TEMP.	11,13
DT	THERMOSTAT	13
DI	DEFROST TIMER	7,8
DI	EVAPORATOR FAN RELAY	7,8
EF	EVAPORATOR FAN RELAY	8,11
ER	ELECTRIC STANDBY RELAY	10,17
ER	CURRENT LIMITER:	
-1		8
-2		10
-3		7
-4		15
-4/1		1
HPCO	HIGH PRESSURE	14
HPCO	CUTOUT SWITCH	14
1K	THERMOSTAT RELAY	15
M2B	CAB CONTROL BOX	15,16
MDC	MOTOR DC	6
PL	PRINT CIRCUIT BOARD	5,17
PLD	PRINT CIRCUIT BOARD	15
-25	DEFROST LED	15
-26	POWER LED	15
-28	POWER LED	15
-4R	OVERLOAD LED	16
-5R	ON MEMBRANE	16
°	SWITCH LED	16
-7R	° F LED	16
PR	POWER RELAY	7,10
PRB	POWER RELAY BATTERY	6,10
PRC	POWER RELAY CORD	12
PS	PILOT SOLENOID	12
S2	MANUAL DEFROST	15
S/S	MEMBRANE SWITCH	15
S/S	ON-OFF MEMBRANE SW.	16
START/STOP	START/STOP SW.	16
ST	START TIMER POWER REL.	11
ST	START TIMER POWER REL.	15
TEMP	TEMPERATURE CONTROL	15
TM	MODULE:	
-ADJUST	DEFROST ADJUST	16
-SETPOINT	DEFROST ADJUST	16
-LED	DEFROST ADJUST	16
TR1	THERMAL PROTECTION	5
TR1, TR2	TRANSFORMER 1PH	2,3

REVISIONS	DATE
A	1354 24.03.98

RELEASED	DATE
B	1744 15.03.99
2 TO 4 BRIDGES	
RECTIF. BR2, BR3	
C	1959 23.07.99
CHANGE FUSE 5	
WAS 4.15, IS 5 A	

Power	Capacitor	Fuse <sup>1)</sup>	Fuse <sup>2)</sup>	Fuse <sup>3)</sup>	Fuse <sup>4)</sup>	Fuse <sup>5)</sup>
12V	99,000µF	15A	10A	3A	1A	5A
25V	2,200µF					
47,000µF	1000µF					
50V	47 µF					
100V	100V					

Wire Cab Box	Power	Capacitor	Fuse <sup>1)</sup>	Fuse <sup>2)</sup>	Fuse <sup>3)</sup>	Fuse <sup>4)</sup>	Fuse <sup>5)</sup>	ON/CAB BOX	Transformer Connections
BR	brown	C1	1	3	4	5			X1=12V X2=0V X3=12V X4=0V
R	red	C2 <sup>1)</sup>							X1=12V X2=0V X3=12V X4=0V
O	orange	99,000µF	15A	10A	3A	1A	5A		X1=12V X2=0V X3=12V X4=0V
Y	yellow	2,200µF							X1=12V X2=0V X3=12V X4=0V
G	green	25V							X1=12V X2=0V X3=12V X4=0V
B	blue	47,000µF							X1=12V X2=0V X3=12V X4=0V
P	purple	1000µF							X1=12V X2=0V X3=12V X4=0V
GR	grey	50V							X1=12V X2=0V X3=12V X4=0V
W	white	40V							X1=12V X2=0V X3=12V X4=0V